

6.2.4 Intermediate Pumps – Manual Operation

The intermediate pumps take flow from the primary effluent channel and pump it to the channel in front of the fine screens. The pumping rate of the intermediate pump station determines the rate of flow to the MBR treatment system.

Manual Control of Pumps Through SCADA

Each of the Intermediate Pumps may be run from SCADA in Manual speed control. This is done through the Intermediate Pump Station Main Screen as shown in **Figure 6.2.4-1**. The screen is accessed by clicking on the **Interm. Pumps** button <1> on the top of the screen. The individual pump controls are accessed by clicking on the **pump icon** <2>. The pump can then be placed into MANUAL mode by selecting the **MANUAL** button <3>. Once in Manual mode, the pump can be turned on and off with the **START/STOP** buttons <4>. The pumping rate of the pump is controlled by changing the % Speed of the pump in the **% Speed Box** <5>. The Disable button will disable the control of the pump so it cannot be operated. The Reset button will reset the controls if there is a failure of the pump.

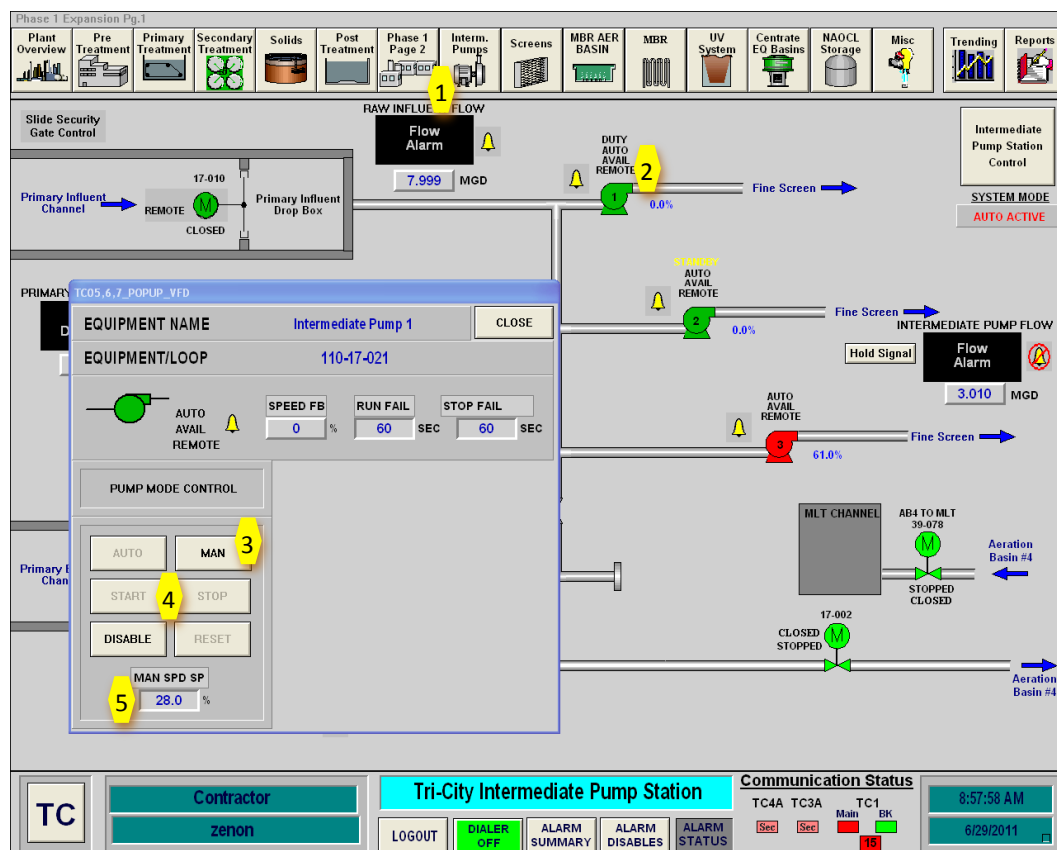


Figure 6.2.4-1 – Intermediate Pump Control Screen and Popup Control Box

Manual Operation of Pumps

Each of the pumps can also be operated manually directly from the VFD for each of the pumps. The VFD for each pump is located in the Fine Screen electrical room. The pump can be operated manually by placing the Hand/Off/Auto selector switch on the VFD

panel in HAND. The speed of the pump is then controlled with the 0-100% speed potentiometer located on the face of the panel.